

✉ stephen@overland360.com

☎ +27828880827



15 Day Best of Botswana Safari Special

Departs from: Johannesburg, South Africa
Ends in: Johannesburg, South Africa
Tour length 15 Days
Destinations: Botswana
Price: ZAR 35,750 per person sharing
Next Departure: 1 June 2023



Stephen Becker

+27 (0)82 888 0827

stephen@overland360.com

✉ stephen@overland360.com

☎ +27828880827



Tour summary

This Botswana safari begins and ends in Johannesburg and explores the best of Botswana over 15 days.

You'll 4×4 along the twisting tracks of Moremi Game Reserve through the lush floodplains of the Okavango Delta, drive north to the game-rich oasis of Savuti and camp out under the stars in one of the last true wildernesses on Earth.

The safari wraps up on the banks of the Chobe River, famous for its stunning views and huge herds of elephants.

Our fully equipped Avis 4×4 Safari Vehicles are best in their class and you'll stay in a mix of superb wild campsites and comfortable safari lodges.

Highlights

- Carefully selected wild safari camps
- 3 nights in Moremi Game Reserve
- The chance to explore the Okavango Delta by motorboat or dugout canoe
- 2 nights in the wild Khawi Conservation Area
- Experience one of Africa's most wonderful wildlife regions along the Savuti River
- Superb elephant encounters in Linyanto and Chobe National Park
- Opportunity for an unforgettable sunset cruise on the Chobe River

✉ stephen@overland360.com

☎ +27828880827



Day 1 - Meet in Johannesburg



Matamba

Pick up your vehicles in Johannesburg and drive north to the stunning [Matamba Bush Camp](#), near the border with Botswana.

Day 2 – Enter Botswana



Khama Rhino Sanctuary

Cross the border into Botswana and visit the famous [Khama Rhino Sanctuary](#), a community-based wildlife project dedicated to the protection of these endangered giants. Spend the night at one of the sanctuary's beautiful private campsites.

✉ stephen@overland360.com

☎ +27828880827



Day 3 – Maun



Sedia Hotel Campsite

Drive northwest to Maun, the gateway to the Okavango Delta. Spend the afternoon exploring the town or relaxing at the [Sedia Hotel](#) campsite on the banks of the Thamalakane River.

Days 4-6 – Moremi Game Reserve



Xakanaka

Moving north through Moremi Game Reserve, you'll follow the historic routes of the early Bechuanaland pioneers into the Moremi/Khwai Concession Area. This stunning region is known for its prolific and diverse wildlife and you'll spend three days based in [Xakanaxa campsite](#), exploring the waterways of the Okavango Delta.

✉ stephen@overland360.com

☎ +27828880827



Days 7-8 – Khwai Concession Area



Magotho Community Camp

From Moremi, you'll make the short drive east, through vast mopani and leadwood forests, to the Khwai Community Concession Area which runs along the northern reaches of the Okavango Delta. The area is famous for wildlife encounters as animals pass through to the Delta from the drier regions further north.

Day 9 – Savuti



Savuti Campsite

After two nights in Khwai, you'll take the long sand track north to the Savuti floodplains. Buffalo, lion and a host of other big game animals are regularly seen as they congregate around one of the few water sources for many miles around.

✉ stephen@overland360.com

☎ +27828880827



Day 10 – Linyanti



Linyanti Campsite

Leaving Savuti, you'll drive north to the elephant Eden on the banks of the enormous Chobe River, where thousands of elephants gather to drink every day.

Day 11 – Chobe National Park



Ihaha Campsite

Meandering along the Chobe River, you'll spend a second night camped on its banks, this time at Ihaha Campsite in the Chobe National Park. Expect stunning views out across the floodplains and huge herds of buffalo and elephant.

✉ stephen@overland360.com

☎ +27828880827



Days 12-13 – Kasane



Chobe Safari Lodge

[Chobe Safari Lodge](#) sits right on the banks of the Chobe River, on the western edge of Botswana's small frontier town of Kasane. You'll spend two nights in their comfortable campsite with the option to take a sunset cruise along this incredible river.

Day 14 – Nata



Elephant Sands

Heading back to Johannesburg, we'll stop for a final night at [Elephant Sands Bush Lodge](#) near Nata. A last chance to lounge in the pool and watch the elephants come in for an evening drink.

✉ stephen@overland360.com

☎ +27828880827

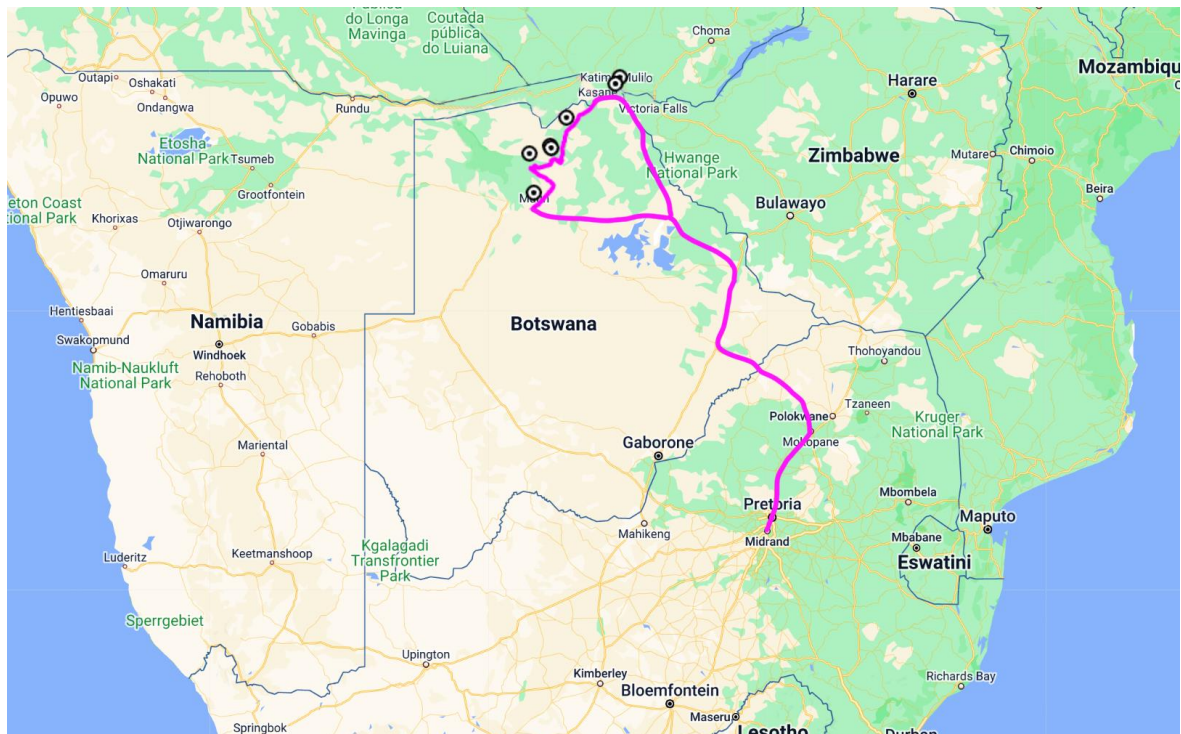
Day 15 – Return to Johannesburg



Return to Johannesburg

Drive back to Johannesburg after two incredible weeks in the African bush.

Route



✉ stephen@overland360.com

☎ +27828880827



Included

- All park and camp fees
- A personal and private fully-equipped, self-drive Avis Safari 4×4 vehicle – which includes:
 - Full bedding
 - Crockery and cutlery
 - Fridge and freezer
 - Table and chairs
 - Solar Power
- Dinner every night
- 2-way radios

Excluded

- Fuel
- Breakfast and lunches
- Beverages
- Personal insurance including medical and evacuation, personal belongings, baggage, cancellation and curtailment
- Tips, curios, and any optional (non-scheduled) excursions and activities
- Local increases in park fees and taxes between time of booking and arrival

[Full terms & conditions](#)

<https://overland360.com/terms-and-conditions/>